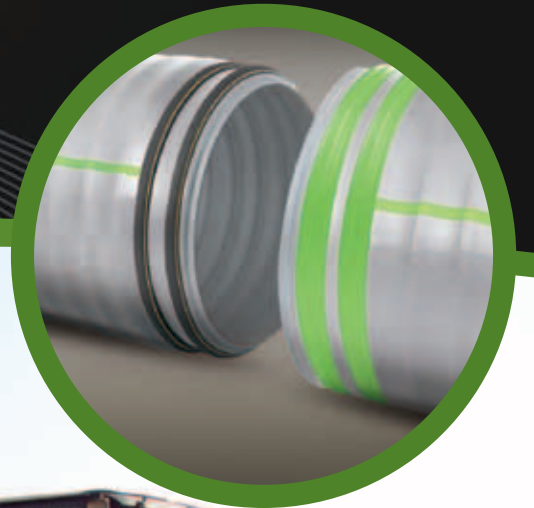


SaniTite® HP
HIGH PERFORMANCE

SaniTite® HP Sewer Pipe 750 mm–1500 mm

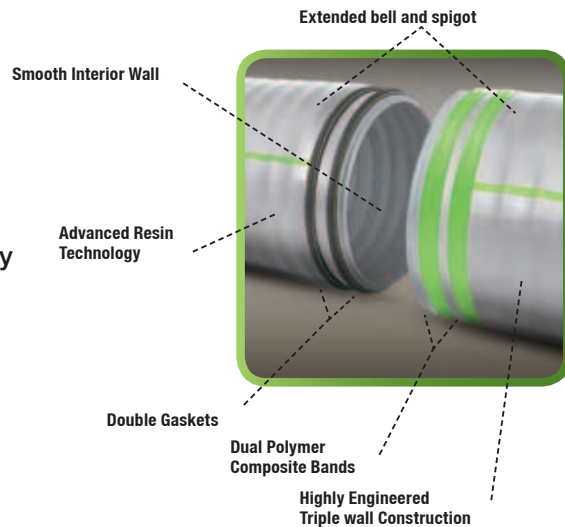


 **ADS Canada**

SANITITE® HP SEWER PIPE 750mm–1500mm

CERTIFIED TO CSA B182.13

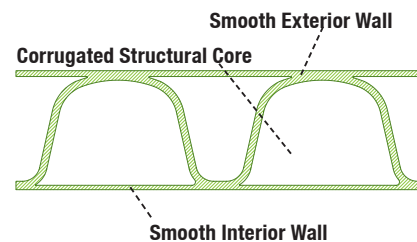
A new addition to our proven line of pipe products, SaniTite HP (High Performance) couples advanced polypropylene resin technology with a patented triple wall profile design for superior performance and durability. This innovative new product meets or exceeds many of the industry standards for pipe stiffness and joint integrity currently used within the sanitary and storm trunk sewer markets. When specifying SaniTite HP, on your next sewer project, you are specifying some of the most stringent requirements in the industry. Design verification, structural considerations, and finished product quality are part of this all-encompassing specification.



TRIPLE WALL CONSTRUCTION & PROFILE DESIGN

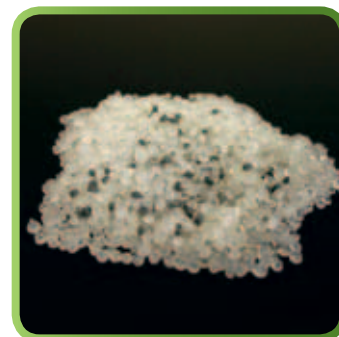
SaniTite HP pipe in the 750mm–1500mm (30"–60") diameters utilize an innovative triple wall construction, providing pipe stiffness values meeting the CSA standard B182.13 (320 kPa) requirements. The additional stiffness and beam strength enhances jobsite performance in stringent line and grade requirements. The triple wall pipe profile provides a smooth exterior that simplifies backfill, installation and manhole connectivity. This profile is completed with a smooth interior that provides additional beam strength as well as excellent flow characteristics.

Exclusive Triple Wall Design

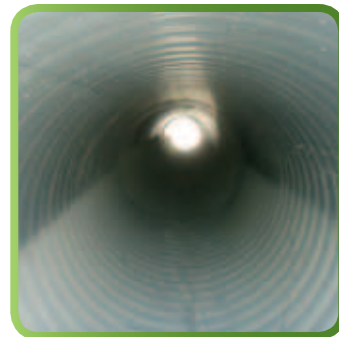


SUPERIOR POLYPROPYLENE MATERIAL

Made from an engineered, impact modified co-polymer compound the superior strength and material properties of polypropylene (PP) offer robust pipe stiffness and excellent handling characteristics. It is chemically resistant to hydrogen sulfide gas and sulfuric acid concentrations typical of sanitary sewers to provide superior durability and performance. The unique light grey resin color provides immediate jobsite recognition as well as improving the pipe's interior visibility during post-installation inspection.



Polypropylene Resin



Interior View

SUPERIOR JOINT PERFORMANCE

SaniTite HP pipe has a patented extended, reinforced bell with two polymer composite bands and dual gaskets that add an additional factor of safety within each joint. The SaniTite HP joint performance is certified to meet or exceed the CSA standard B182.13 requirements (100 kPa).

In the field, each section of SaniTite HP may be tested by a low pressure air test, according to ASTM F1417, which is a commonly used standard and specifies that 24.1 kPa (3.5 psi) air pressure be held for a specified length of time based upon pipe diameter and length of run.

Where a hydrostatic infiltration/exfiltration test is preferred, ASTM F2487 specifies a simplistic method of verifying proper joint performance. As specified, the system is plugged, filled with water and then measured for water loss within a specified period of time. Performance is recorded as litres of water lost per millimetre of inside diameter per kilometre of pipe per day.

Joint isolation tests are sometimes specified in lieu of whole line air or hydrostatic requirements due to safety concerns, especially prevalent with larger diameters. Please reference your local specifications for joint isolation standards or contact your ADS representative for additional information.

DIAMETER RANGE

SaniTite HP pipe meeting CSA B182.13 is currently manufactured in the 750mm-1200mm (30"-48") size range in 6m (20 foot) or 4m (13 foot) lengths. The 1500mm (60") diameter is available in 6m (20 foot) and 5m (16 foot) lengths. The 6m (20 foot) lengths provide a faster installation and fewer joints. However, the 4m (13 foot) lengths are often preferred for deeper projects where trench conditions are more challenging.



Joint Isolation Test



Typical ASTM F1417 Air Test

DIAMETER	DIAMETER RANGE					
	PRODUCT #	PROFILE TYPE	LENGTH	INSIDE DIAMETER	OUTSIDE DIAMETER	TRUCKLOAD FOOTAGE
750mm (30 in.)	3030 0020 IBHP	Triple Wall	6 m (20 ft.)	765 mm (30.1 in)	899 mm (35.4 in)	110 m (360 ft.)
750mm (30 in.)	3030 0013 IBHP	Triple Wall	4 m (13 ft.)	765 mm (30.1 in)	899 mm (35.4 in)	91 m (299 ft.)
900mm (36 in.)	3630 0020 IBHP	Triple Wall	6 m (20 ft.)	907 mm (35.7 in)	1044 mm (41.1 in)	73 m (240 ft.)
900mm (36 in.)	3630 0013 IBHP	Triple Wall	4 m (13 ft.)	907 mm (35.7 in)	1044 mm (41.1 in)	48 m (156 ft.)
1050mm (42 in.)	4230 0020 IBHP	Triple Wall	6 m (20 ft.)	1062 mm (41.8 in)	1199 mm (47.2 in)	49 m (160 ft.)
1050mm (42 in.)	4230 0013 IBHP	Triple Wall	4 m (13 ft.)	1062 mm (41.8 in)	1199 mm (47.2 in)	40 m (130 ft.)
1200mm (48 in.)	4830 0020 IBHP	Triple Wall	6 m (20 ft.)	1201 mm (47.3 in)	1367 mm (53.8 in)	37 m (120 ft.)
1200mm (48 in.)	4830 0013 IBHP	Triple Wall	4 m (13 ft.)	1201 mm (47.3 in)	1367 mm (53.8 in)	24 m (78 ft.)
1500mm (60 in.)	6030 0020 IBHP	Triple Wall	6 m (20 ft.)	1506 mm (59.3 in)	1689 mm (66.5 in)	24 m (80 ft.)
1500mm (60 in.)	6030 0016 IBHP	Triple Wall	5 m (16 ft.)	1506 mm (59.3 in)	1689 mm (66.5 in)	20 m (65 ft.)

*Contact your Sales Representative for availability of sizes in your area.

FITTINGS

Standard and custom fittings are available for the SaniTite HP product line. The fittings are manufactured from pipe meeting CSA B182.13. Testable repair couplers are also available and include stainless steel restraint bands. Please contact your ADS representative for additional project specific information and capabilities.

TAP CONNECTIONS

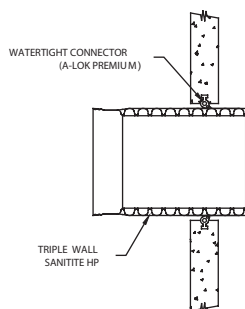
A standard tapping product, such as Inserta Tee®, is compatible with SaniTite HP.

750 MM-1500 MM TRIPLE WALL STRUCTURE CONNECTIONS

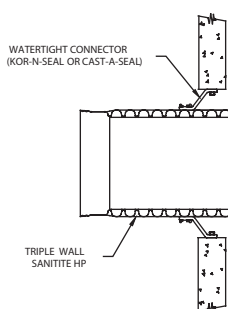
Sewer projects involving manhole connections require superior watertight performance combined with a flexible connection solution that can withstand the rigours of installation. To meet varying regional requirements, ADS offers a wide selection of connection options utilizing some of the most widely used manhole connectors on the market today from companies such as A-Lok, NPC and Press Seal Gasket Corporation.

When connecting triple wall SaniTite HP pipe to a manhole, a smooth exterior surface is required for commonly used flexible manhole connectors on the market today. Due to the innovative design of the exterior shell on large diameter SaniTite HP, commonly used manhole connectors on the market today can connect directly to a section of SaniTite HP pipe with no additional fittings or adapters.

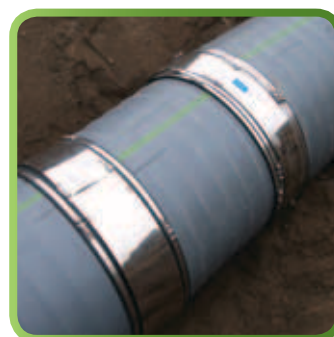
Pre-Cast Compression Gasket Connection



Flexible Boot Connection



PIPE DIAMETER	A-LOK PREMIUM RING PRODUCT CODE
750mm (30 in.)	1130
900mm (36 in.)	1310
1050mm (42 in.)	1520
1200mm (48 in.)	1705
1500mm (60 in.)	2070



Repair Coupler



Typical Inserta Tee Tap



Boot Connection Directly to SaniTite HP



A-Lok Premium Compression Connection

ADS SANITITE® HP 750mm–1500mm (30”-60”) SANITARY PIPE SPECIFICATION

SCOPE

This specification describes 750 to 1500 mm (30- through 60-inch) ADS SaniTite HP pipe for use in gravity-flow sewer applications.

PIPE REQUIREMENTS

ADS SaniTite HP pipe shall have smooth interior and exterior surfaces with annular inner corrugations.

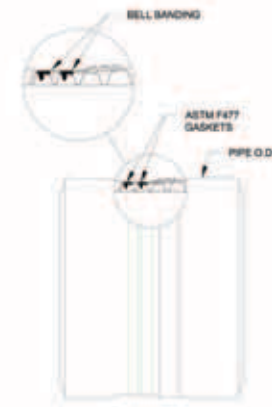
- 750 to 1500 mm (30- through 60-inch) pipe shall be certified by an accredited certification body to meet CSA B182.13.
- 750 to 1500 mm (30- through 60-inch) pipe shall have a minimum pipe stiffness of 320 kPa when tested in accordance with ASTM D2412.
- Manning’s “n” value for use in design shall be 0.012.

JOINT PERFORMANCE

Pipe shall be joined with a gasketed integral bell & spigot joint meeting the requirements of CSA B182.13.

750 to 1500 mm (30- through 60-inch) shall be watertight according to the requirements of CSA B182.13. Spigot shall have two gaskets meeting the requirements of ASTM F477. Gaskets shall be installed by the pipe manufacturer and covered with a removable, protective wrap to ensure the gaskets are free from debris. A joint lubricant available from the manufacturer shall be used on the gasket and bell during assembly.

750 to 1500mm (30- through 60-inch) diameters shall have a reinforced bell with a polymer composite band installed by the manufacturer.



(Check with a sales representative for regional product configuration.)

FITTINGS

Fittings shall conform to CSA B182.13. Bell & spigot connections shall utilize a spun-on, welded or integral bell and spigot with gaskets meeting ASTM F477. Fitting joints shall meet the watertight joint performance requirements of CSA B182.13.

FIELD PIPE AND JOINT PERFORMANCE

To assure watertightness, field performance verification may be accomplished by testing in accordance with ASTM F1417 or ASTM F2487. Appropriate safety precautions must be used when field-testing any pipe material. Contact the manufacturer for recommended leakage rates.

MATERIAL PROPERTIES

Polypropylene compound for pipe and fitting production shall be an impact modified copolymer meeting the material requirements of CSA B182.13.

INSTALLATION

Installation shall be in accordance with CSA B182.11 and ADS recommended installation guidelines, with the exception that minimum cover in traffic areas for 750 to 1200 mm (30- through 48-inch) diameters shall be 0.3 m (1 ft.) and for 1500 mm (60”) diameter the minimum cover shall be 0.6 m (2 ft.) in single run applications. Backfill for minimum cover situations shall consist of Class I or Class II (minimum 90% SPD) material. Maximum fill heights depend on embedment material and compaction level; please refer to Technical Note 2.05C. Contact your local ADS representative or visit our website at www.ads-pipcanada.com for a copy of the latest installation guidelines.

PIPE DIMENSIONS

Nominal Diameter mm (in.)	750 (30)	900 (36)	1050 (42)	1200 (48)	1500 (60)
Pipe I.D. mm (in.)	765 (30.1)	907 (35.7)	1062 (41.8)	1201 (47.3)	1506 (59.3)
Pipe O.D. mm (in.)	899 (35.4)	1044 (41.1)	1199 (47.2)	1367 (53.8)	1689 (66.5)
Minimum Pipe Stiffness at 5% Deflection* kN/m (#/in./in.)	320 (46)	320 (46)	320 (46)	320 (46)	320 (46)

*Minimum pipe stiffness values listed; contact a representative for maximum values.

ADS "Terms and Conditions of Sale" are available on the ADS website, www.ads-pipcanada.com
The ADS logo, the Green Stripe and N-12® HP are registered trademarks of Advanced Drainage Systems, Inc. Inserta Tee® is a registered trademark of INSERTA FITTINGS, Co. A-Lok is a registered trademark of A-Lok Products, Inc. NPC is a registered trademark of Trelleborg Pipe Seals Milford, Inc. Press Seal Gasket Corporation is a registered trademark of Press Seal Gasket Corporation.
© 2012 Advanced Drainage Systems, Inc.
BRO #1242 07/12 MH



Advanced Drainage Systems, Inc.
3135 Boomer Line, Heidelberg, ON N0B 1Y0
1-800-866-4496
www.ads-pipcanada.com

