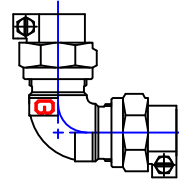


Cambridge Brass
P.O. Box 249
140 Orion Place
Cambridge, Ontario
Canada N1R 5V1
Tel: (519) 621-5520
Fax: (519) 621-8674
<http://www.cambridgebrass.com>

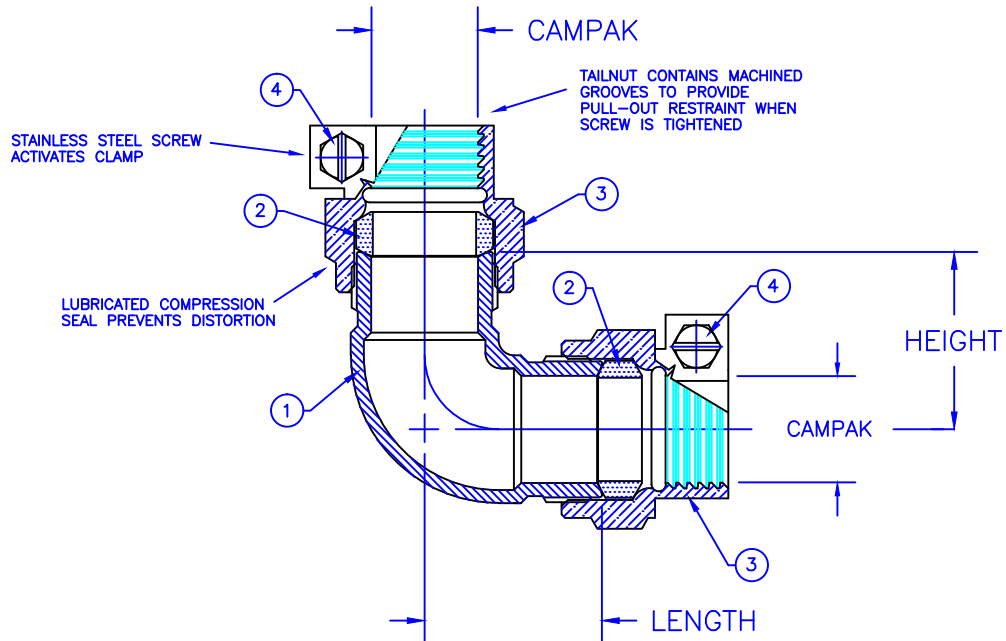


MODEL NO. 105NL

CAMPAK x CAMPAK

ELL COUPLING

CAMPAK COMPRESSION FOR COPPER OR PLASTIC TUBING (CTS)



PARTS AND MATERIAL:

1. ELBOW BODY: CAST BRASS, ALLOY C89833
2. COMPRESSION SEAL: NITRILE RUBBER
3. CAMPAK NUT: CAST BRASS, ALLOY C83600
4. SCREW: STAINLESS STEEL, ALLOY 304

FEATURES:

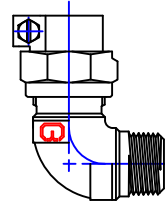
- ALL COMPONENTS CONFORM TO AWWA C800-05 (ASTM B-584 UNS NO C89833 FOR BRASS PARTS IN CONTACT WITH POTABLE WATER, AND ASTM B-62 AND B-584 UNS NO C83600 FOR ALL OTHER BRASS PARTS).
- CONFORMS TO ANSI/NSF 61-8
- CONFORMS TO ANSI/NSF 372 (COMPLIANT WITH US Safe Drinking Water Act. PL 111-380)
- 300 PSI WORKING PRESSURE

Cambridge Brass considers the information in this submittal form to be correct at the time of publication. Item and option availability, including specifications, are subject to change without notice.

ELL COUPLING SIZE	CATALOG NO.	CAMPAK BOTH ENDS	LENGTH	HEIGHT	APPROX. WT. LBS.
3/4"	105NL-B3B3	3/4"	1.50"	1.50"	1.1
1"	105NL-B4B4	1"	1.79"	1.79"	1.8
1 1/2"	105NL-B6B6	1 1/2"	2.60"	2.60"	5.0
2"	105NL-B7B7	2"	3.14"	3.14"	7.5

Submitted by:

Cambridge Brass
P.O. Box 249
140 Orion Place
Cambridge, Ontario
Canada N1R 5V1
Tel: (519) 621-5520
Fax: (519) 621-8674
<http://www.cambridgebrass.com>

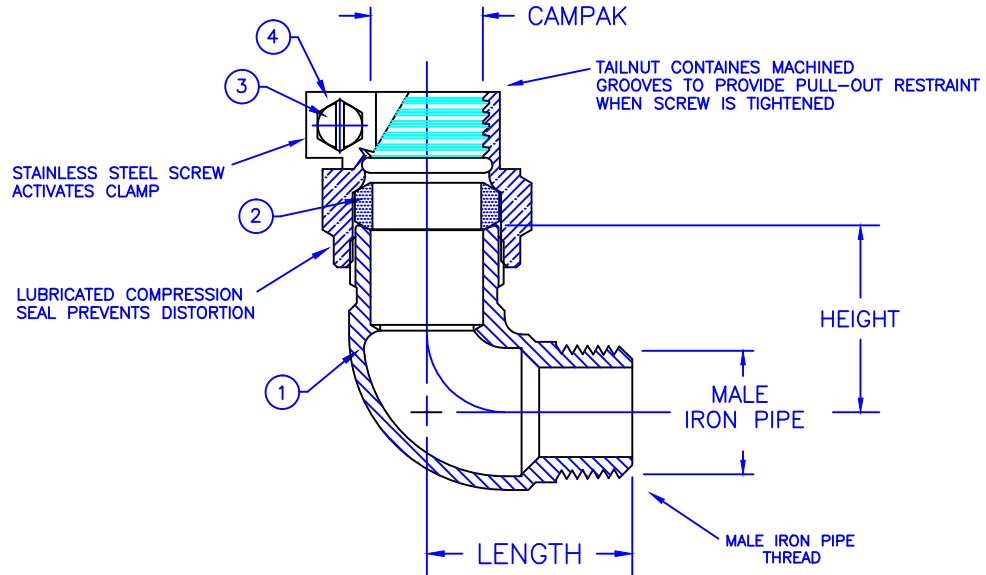


MODEL NO. 105NL

CAMPAK x MALE IRON PIPE

ELL COUPLING

CAMPAK COMPRESSION FOR COPPER OR PLASTIC TUBING (CTS) BY THREADED PIPE



PARTS AND MATERIAL:

1. ELBOW BODY: CAST BRASS, ALLOY C89833
2. COMPRESSION SEAL: NITRILE RUBBER
3. SCREW: STAINLESS STEEL, ALLOY 304
4. CAMPAK NUT: CAST BRASS, ALLOY C83600

FEATURES:

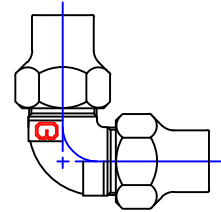
- ALL COMPONENTS CONFORM TO AWWA C800-05 (ASTM B-584 UNS NO C89833 FOR BRASS PARTS IN CONTACT WITH POTABLE WATER, AND ASTM B-62 AND B-584 UNS NO C83600 FOR ALL OTHER BRASS PARTS).
- CONFORMS TO ANSI/NSF 61-8
- CONFORMS TO ANSI/NSF 372 (COMPLIANT WITH US Safe Drinking Water Act. PL 111-380)
- 300 PSI WORKING PRESSURE

Cambridge Brass considers the information in this submittal form to be correct at the time of publication. Item and option availability, including specifications, are subject to change without notice.

ELL COUPLING SIZE	CATALOG NO.	CAMPAK	MALE IRON PIPE	LENGTH	HEIGHT	APPROX. WT. LBS.
3/4"	105NL-B3M3	3/4"	3/4"	1.65"	1.50"	0.8
1"	105NL-B4M4	1"	1"	1.98"	1.79"	1.1
1 1/2"	105NL-B6M6	1 1/2"	1 1/2"	2.66"	2.54"	2.9
2"	105NL-B7M7	2"	2"	3.13"	3.14"	4.5

Submitted by:

Cambridge Brass
P.O. Box 249
140 Orion Place
Cambridge, Ontario
Canada N1R 5V1
Tel: (519) 621-5520
Fax: (519) 621-8674
<http://www.cambridgebrass.com>

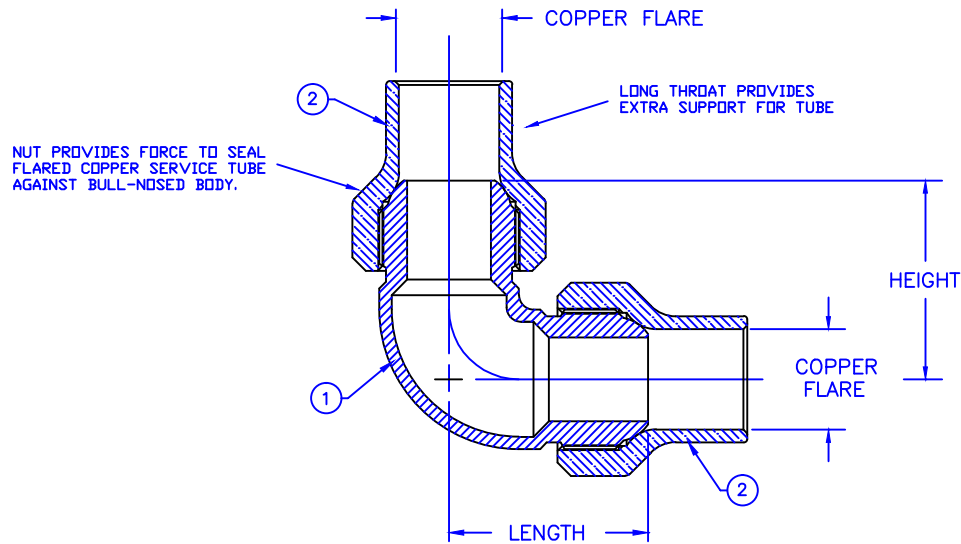


MODEL NO. 105NL

COPPER FLARE x COPPER FLARE

ELL COUPLING

COPPER FLARE BY COPPER FLARE FOR COPPER TUBING



PARTS AND MATERIAL:
1. ELBOW BODY: CAST BRASS, ALLOY C89833
2. CF NUT: CAST BRASS, ALLOY C83600

FEATURES:

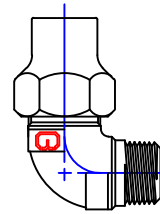
- ALL COMPONENTS CONFORM TO AWWA C800-05 (ASTM B-584 UNS NO C89833 FOR BRASS PARTS IN CONTACT WITH POTABLE WATER, AND ASTM B-62 AND B-584 UNS NO C83600 FOR ALL OTHER BRASS PARTS).
- CONFORMS TO ANSI/NSF 61-8
- CONFORMS TO ANSI/NSF 372 (COMPLIANT WITH US Safe Drinking Water Act. PL 111-380)
- 300 PSI WORKING PRESSURE

Cambridge Brass considers the information in this submittal form to be correct at the time of publication. Item and option availability, including specifications, are subject to change without notice.

ELL COUPLING SIZE	CATALOG NO.	COPPER FLARE (BOTH ENDS)	LENGTH	HEIGHT	APPROX. WT. LBS.
1 1/2"	105NL-C6C6	1 1/2"	2.95"	2.95"	6.5
2"	105NL-C7C7	2"	3.44"	3.44"	10.6

Submitted by:

Cambridge Brass
P.O. Box 249
140 Orion Place
Cambridge, Ontario
Canada N1R 5V1
Tel: (519) 621-5520
Fax: (519) 621-8674
<http://www.cambridgebrass.com>

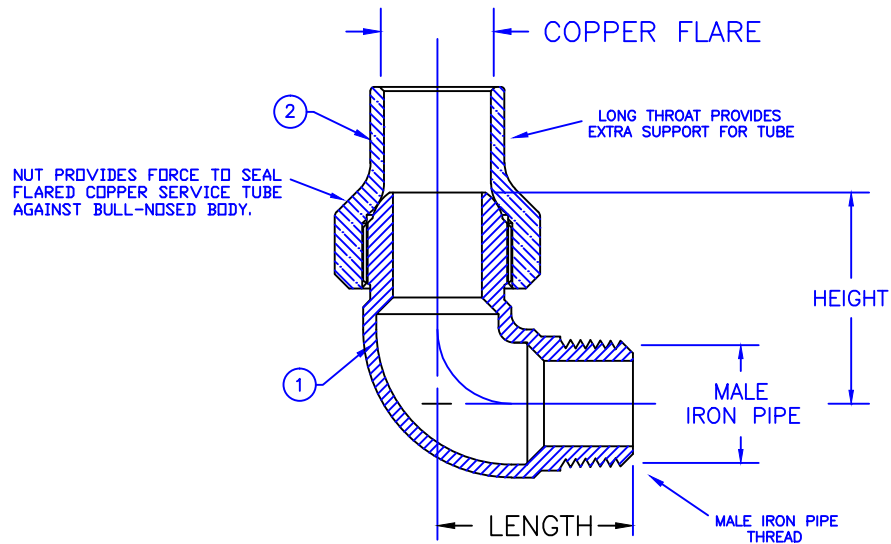


MODEL NO. 105NL

COPPER FLARE x MALE IRON PIPE

ELL COUPLING

COPPER FLARE FOR COPPER TUBING BY THREADED PIPE



PARTS AND MATERIAL:
1. ELBOW BODY: CAST BRASS, ALLOY C89833
2. NUT: CAST BRASS, ALLOY C83600

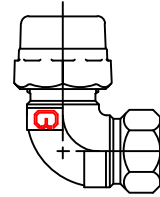
FEATURES:
- ALL COMPONENTS CONFORM TO AWWA C800-05
(ASTM B-584 UNS NO C89833 FOR BRASS PARTS IN CONTACT WITH POTABLE WATER, AND ASTM B-62 AND B-584 UNS NO C83600 FOR ALL OTHER BRASS PARTS).
- CONFORMS TO ANSI/NSF 61-8
- CONFORMS TO ANSI/NSF 372 (COMPLIANT WITH US Safe Drinking Water Act. PL 111-380)
- 300 PSI WORKING PRESSURE

Cambridge Brass considers the information in this submittal form to be correct at the time of publication.
Item and option availability, including specifications, are subject to change without notice.

ELL COUPLING SIZE	CATALOG NO.	COPPER FLARE	MALE IRON PIPE	LENGTH	HEIGHT	APPROX. WT. LBS.
3/4"	105NL-C3M3	3/4"	3/4"	1.65"	1.78"	0.9
1"	105NL-C4M4	1"	1"	2.01"	2.09"	1.4
1 1/2"	105NL-C6M6	1 1/2"	1 1/2"	2.66"	2.66"	4.2
2"	105NL-C7M7	2"	2"	3.13"	3.25"	7.2

Submitted by:

Cambridge Brass
P.O. Box 249
140 Orion Place
Cambridge, Ontario
Canada N1R 5V1
Tel: (519) 621-5520
Fax: (519) 621-8674
<http://www.cambridgebrass.com>

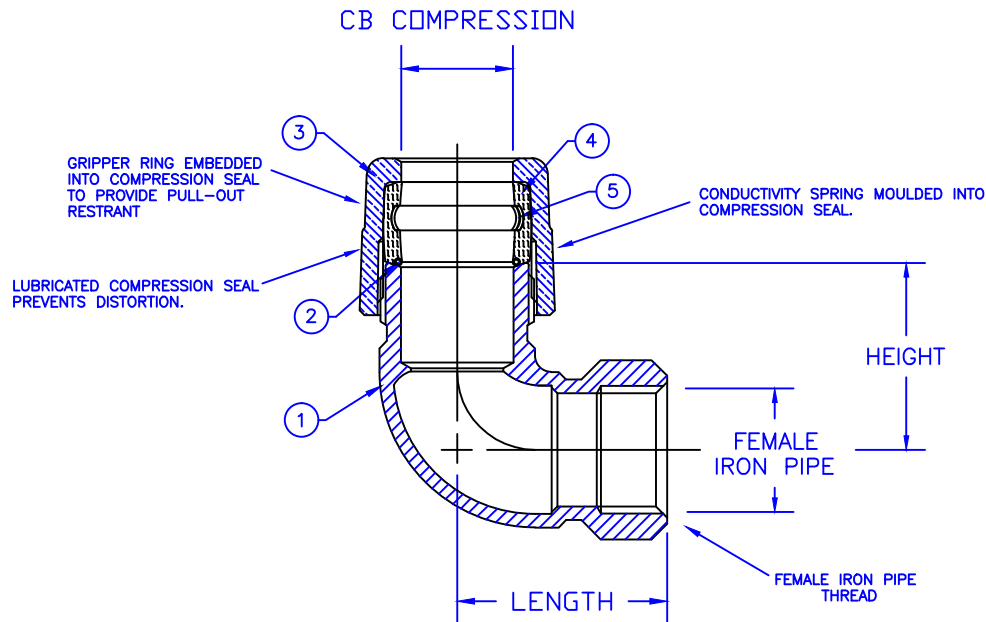


MODEL NO. 105NL

CB COMPRESSION x FEMALE IRON PIPE

ELL COUPLING

CB COMPRESSION FOR COPPER OR PLASTIC TUBING (CTS) BY THREADED PIPE



PARTS AND MATERIAL:

1. ELBOW BODY: CAST BRASS, ALLOY C89833
2. CONDUCTOR SPRING: BRASS
3. COMPRESSION NUT: CAST BRASS, ALLOY C83600
4. COMPRESSION SEAL: EPDM
5. GRIPPER: STAINLESS STEEL, ALLOY 302

FEATURES:

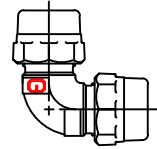
- ALL COMPONENTS CONFORM TO AWWA C800 (ASTM B-584 UNS NO C89833 FOR BRASS PARTS IN CONTACT WITH POTABLE WATER, AND ASTM B-62 AND B-584 UNS NO C83600 FOR ALL OTHER BRASS PARTS).
- CONFORMS TO ANSI/NSF 61-8
- CONFORMS TO ANSI/NSF 372 (COMPLIANT WITH US Safe Drinking Water Act. PL 111-380)
- 300 PSI WORKING PRESSURE

Cambridge Brass considers the information in this submittal form to be correct at the time of publication. Item and option availability, including specifications, are subject to change without notice.

ELL COUPLING SIZE	CATALOG NO.	CB COMPRESSION	FEMALE IRON PIPE	LENGTH	HEIGHT	APPROX. WT. LBS.
3/4"	105NL-H3F3	3/4"	3/4"	1.69"	1.50"	0.8
1"	105NL-H4F4	1"	1"	1.97"	1.79"	1.4
1 1/2"	105NL-H6F6	1 1/2"	1 1/2"	2.60"	2.60"	3.3
2"	105NL-H7F7	2"	2"	3.14"	3.14"	5.3

Submitted by:

Cambridge Brass
P.O. Box 249
140 Orion Place
Cambridge, Ontario
Canada N1R 5V1
Tel: (519) 621-5520
Fax: (519) 621-8674
<http://www.cambridgebrass.com>

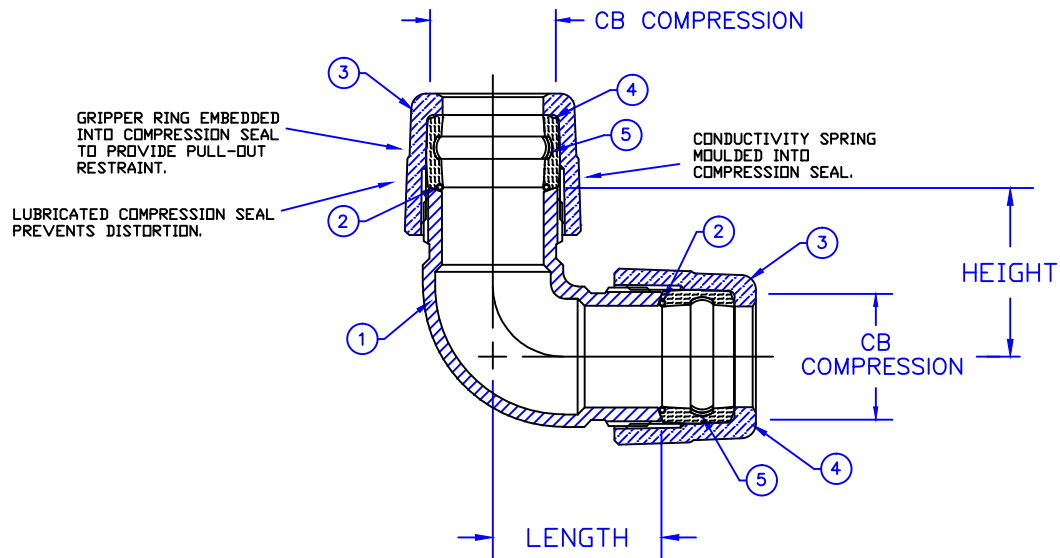


MODEL NO. 105NL

CB COMPRESSION x CB COMPRESSION

ELL COUPLING

CB COMPRESSION FOR COPPER OR PLASTIC TUBING (CTS)



PARTS AND MATERIAL:

1. ELBOW BODY: CAST BRASS, ALLOY C89833
2. CONDUCTOR SPRING: BRASS
3. COMPRESSION NUT: CAST BRASS, ALLOY C83600
4. COMPRESSION SEAL: EPDM
5. GRIPPER: STAINLESS STEEL, ALLOY 302

FEATURES:

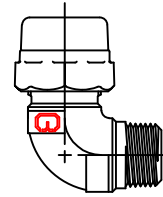
- ALL COMPONENTS CONFORM TO AWWA C800 (ASTM B-584 UNS NO C89833 FOR BRASS PARTS IN CONTACT WITH POTABLE WATER, AND ASTM B-62 AND B-584 UNS NO C83600 FOR ALL OTHER BRASS PARTS).
- CONFORMS TO ANSI/NSF 61-8
- CONFORMS TO ANSI/NSF 372 (COMPLIANT WITH US Safe Drinking Water Act. PL 111-380)
- 300 PSI WORKING PRESSURE

Cambridge Brass considers the information in this submittal form to be correct at the time of publication.
Item and option availability, including specifications, are subject to change without notice.

ELL COUPLING SIZE	CATALOG NO.	CB COMPRESSION BOTH ENDS	LENGTH	HEIGHT	APPROX. WT. LBS.
3/4"	105NL-H3H3	3/4"	1.50"	1.50"	1.1
1"	105NL-H4H4	1"	1.79"	1.79"	2.0
1 1/2"	105NL-H6H6	1 1/2"	2.60"	2.60"	4.1
2"	105NL-H7H7	2"	3.14"	3.14"	6.0

Submitted by:

Cambridge Brass
P.O. Box 249
140 Orion Place
Cambridge, Ontario
Canada N1R 5V1
Tel: (519) 621-5520
Fax: (519) 621-8674
<http://www.cambridgebrass.com>

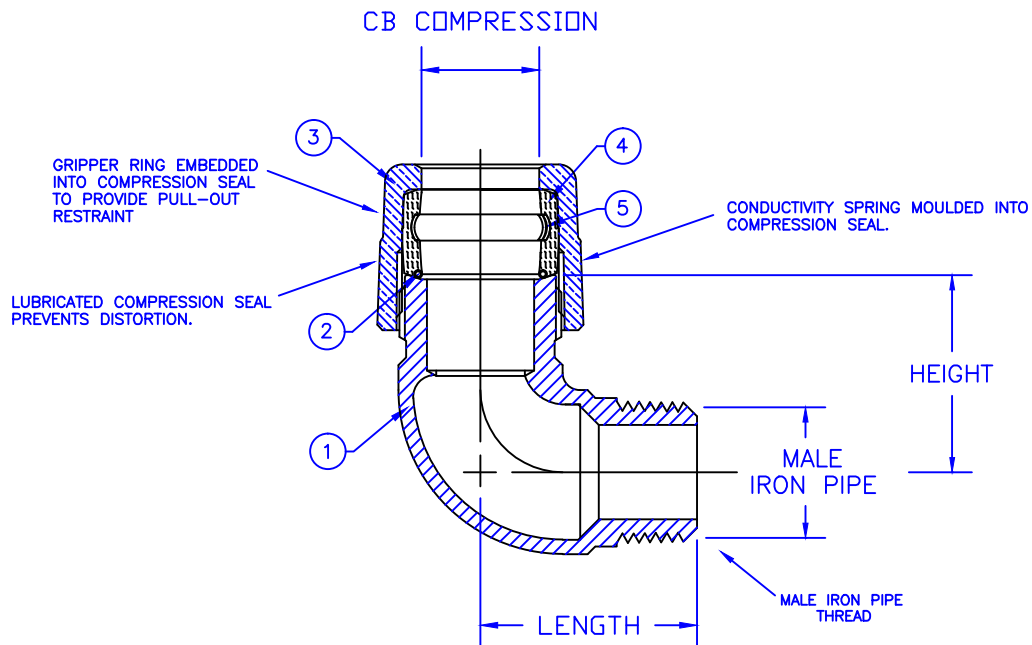


MODEL NO. 105NL

CB COMPRESSION x MALE IRON PIPE

ELL COUPLING

CB COMPRESSION FOR COPPER OR PLASTIC TUBING (CTS) BY THREADED PIPE



PARTS AND MATERIAL:
1. ELBOW BODY: CAST BRASS, ALLOY C89833
2. CONDUCTOR SPRING: BRASS
3. COMPRESSION NUT: CAST BRASS, ALLOY C83600
4. COMPRESSION SEAL: EPDM
5. GRIPPER: STAINLESS STEEL, ALLOY 302

FEATURES:

- ALL COMPONENTS CONFORM TO AWWA C800 (ASTM B-584 UNS NO C89833 FOR BRASS PARTS IN CONTACT WITH POTABLE WATER, AND ASTM B-62 AND B-584 UNS NO C83600 FOR ALL OTHER BRASS PARTS).
- CONFORMS TO ANSI/NSF 61-8
- CONFORMS TO ANSI/NSF 372 (COMPLIANT WITH US Safe Drinking Water Act. PL 111-380)
- 300 PSI WORKING PRESSURE

Cambridge Brass considers the information in this submittal form to be correct at the time of publication. Item and option availability, including specifications, are subject to change without notice.

ELL COUPLING SIZE	CATALOG NO.	CB COMPRESSION	MALE IRON PIPE	LENGTH	HEIGHT	APPROX. WT. LBS.
3/4"	105NL-H3M3	3/4"	3/4"	1.65"	1.50"	0.8
1"	105NL-H4M4	1"	1"	1.98"	1.79"	1.3
1 1/2"	105NL-H6M6	1 1/2"	1 1/2"	2.66"	2.54"	3.2
2"	105NL-H7M7	2"	2"	3.13"	3.14"	4.9

Submitted by: